



ASESTM
SECURITY



ANALOGUE ADDRESSABLE FIRE ALARM SYSTEM



Analogue Addressable Fire Alarm Control Panel

Description

ASES EN Addressable (AS-901-FAP) is a fire detection panel which can detect fires through wired, detectors & devices. With an intuitive touchscreen interface, it can provide information and be Configured in a simple and intuitive way.

Features

- 240 addresses per loop
- Subdivision of the system up to 199 zones
- Up to 74 actions and 999 programming events
- Touchscreen 8"
- Programmable zone and devices text. 20 characters each
- 10,000 events log and real-time clock
- Two sounders outputs
- One 24Vcc output
- Alarm relay and fault relay energized
- Test mode by zone
- Multiple action up to 7 devices
- Day - night mode for delays and device sensitivity
- Configuration transmission from USB memory stick without cable
- Communication ports included: RS232, RS485 and TCP/IP
- MODBUS output (optional) per TCP/IP port
- Programming software

Specifications:

Main supply	:	88 – 264 Vca
Loop Voltage	:	28 – 30 Vcc
Addresses per loop	:	240 devices
24 Vcc aux output voltage	:	200 mA
Sounder output voltage	:	250 mA each
Relays	:	2 A@30 Vcc
Loop maximum length mm	:	2 km with twisted pair 2 x 1,5
Dimensions	:	450 x 450 x 165 mm
Weight (without batteries)	:	11,5 kg
Batteries (recommended)	:	2 units 12 Vcc 18 Ah
Operating Temperature (no icing)	:	-5° to 45°C
Max humidity (no condensing)	:	< 95%
IP rating	:	Ip30



Applications

- One can fit small and large installations. It can find application in the following fields:
- Industrial plants, offices, shops and buildings that host
- communities.
- Medium and large size structures.
- Complex anti-intrusion systems.
- Other supervision and control systems.

Analogue Addressable Detector & Devices



Heat Detector

- Intelligent digital communication protocol
- Central LED for 360° visibility
- AIR and B classification modes
- Low profile design
- Remote LED output

Photoelectric Smoke Detector

- 1-240 address range
- Intelligent digital communication protocol
- Central LED for 360° visibility
- Double dust trap chamber design
- Drift compensation algorithm

Multi Detector

- 1 - 240 address range
- Intelligent digital communication protocol
- Central LED for 360° visibility
- Double dust trap chamber design
- Drift compensation algorithm thresholds



Manual Call Point

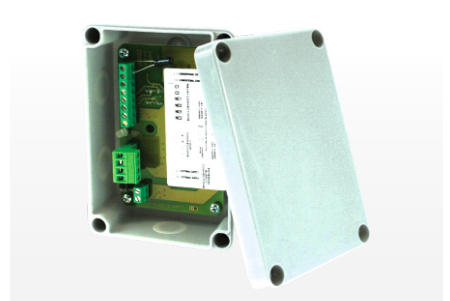
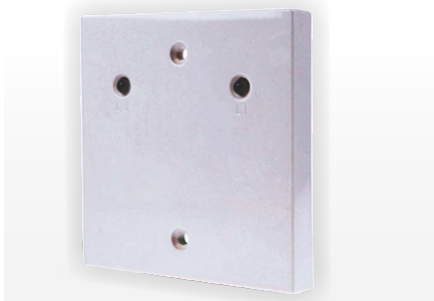
- 1 - 240 address range
- Intelligent digital communication protocol
- LED indication
- Integrated short circuit isolator
- Resettable operating element

Sounder Base

- 1 - 240 address range
- Intelligent digital communication protocol
- 32 tone setting
- Multiple volume levels
- Programmable through handheld Programming Tool

Supervised Input Module

- 1 - 240 address range
- Integrated short circuit isolator
- Low current consumption
- Single monitored input circuit
- Fast fit plug-in cable connections
- Bi-colour LED for status indication



Input & Relay Output Module

- 1 - 240 address range
- Integrated short circuit isolator
- Low current consumption
- Monitored input and volt-free output providing changeover relay contacts

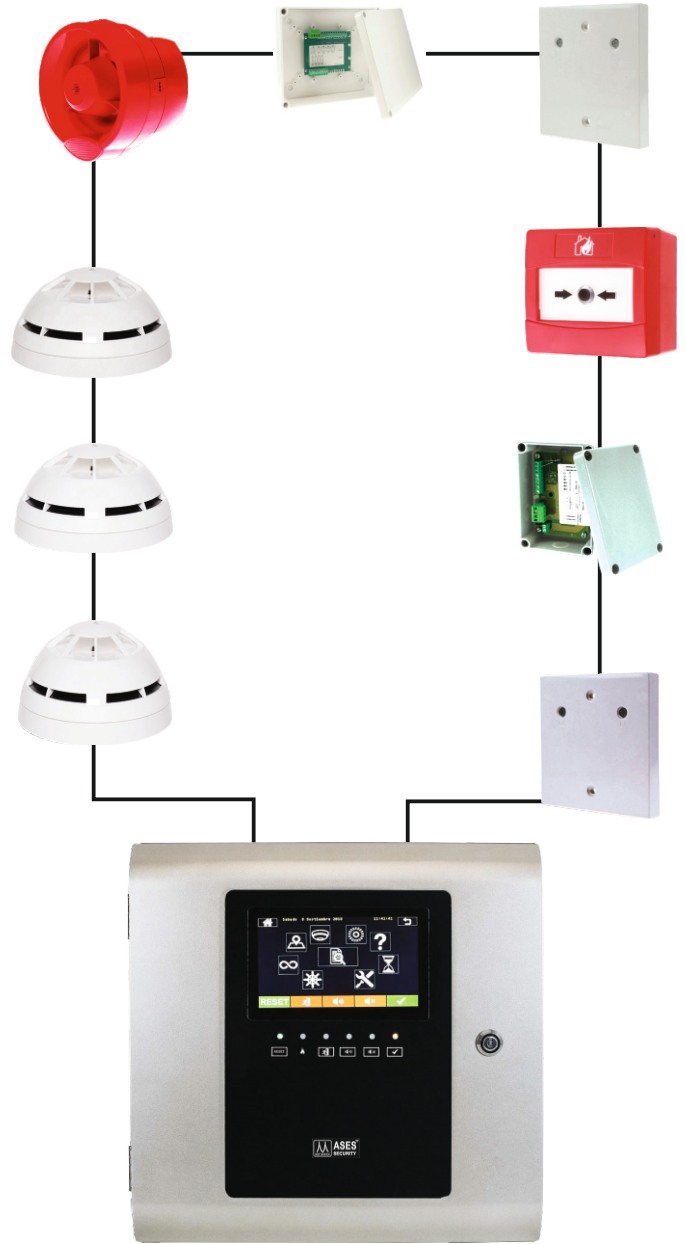
Multi Channel I/O Module

- 1-240 address range
- Intelligent digital communication protocol
- Central LED for 360° visibility
- Double dust trap chamber design
- Drift compensation algorithm

Con. Zone Interface Module

- 1 - 240 address range
- Integrated short circuit isolator
- Low current consumption
- Volt-free output providing changeover relay contacts
- Fast fit plug-in cable connections

System Configuration



Addressable Devices



Head Office
301, Aggarwal Tower, L.S.C-II, Mandawali
Patparganj, Delhi-110092

Kolkata Office
Mira Bhawan, 250, Block-B, Laketown,
Ground Floor, Kolkata-700089

Office & Wokrs-Unit-1
ASES House, A-2/69, Site-IV, Sahibabad
Industrial Area. Ghaziabad, U.P.-201010

Bangalore Office
No-18, 2nd Floor, Mataadahilli, Further Extensions, R.T.
Nagar, Next Building to Himalay, Bangalore -560032

Office & Works Unit-2
Plot No. 52, Toy City, Ecotech-III,
Greater Noida, Uttar Pradesh-201306

Mumbai Office
7/A-4, Shiv Shakti Industrial Estate, Opp. Damodar
park, LBS Marg, Ghatkopar (W), Mumbai-400086